

How to use the NEXThaler®

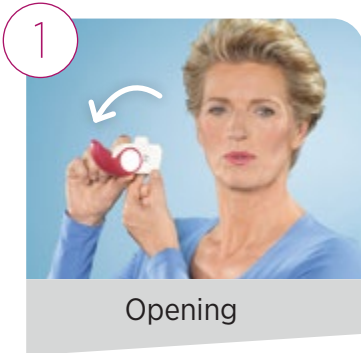
Cleaning:

Wipe the mouthpiece of the inhaler once per week with a dry towel (no water).

Storage:

Do not store above 25°C after opening the bag. Do not expose the inhaler to any damp or wet conditions.

Inhaling properly step by step

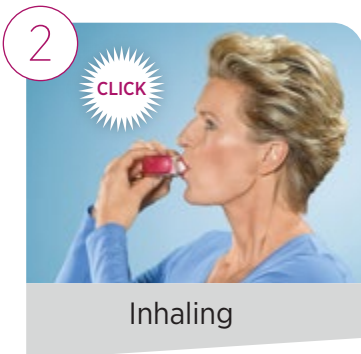


120

Before use, check the dose counter. A value between “1” and “120” indicates that there are still further dosages in the NEXThaler®.

Make sure that the protective cap is closed completely before you use the inhaler.

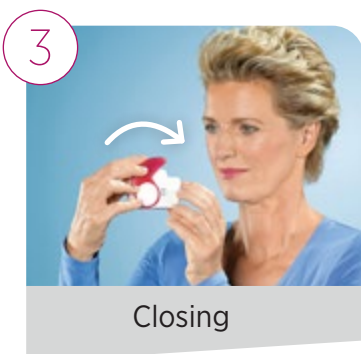
Hold the inhaler firmly in an upright position. Now open the protective cap to the fullest extent (audible click sound). Exhale as deeply as possible. While doing so, do not breathe into the inhaler.



Place the inhaler into your mouth and enclose the mouthpiece firmly with your lips. Make sure that you do not block the air inlet while holding the inhaler. Inhale quickly and continue inhaling deeply. You will hear a clicking sound. Do not allow this to irritate you and continue inhaling deeply.

Then remove the inhaler from your mouth and hold your breath for 5 to 10 seconds or for as long you can without difficulty.

Exhale slowly. Do not breathe into the inhaler.



119

Check whether the dose counter indicates one dosage fewer. If this is not the case, please consult your doctor for an assessment of the inhalation technique and/or ask your chemist to examine the condition of the device. If you need another dose, repeat steps 1–3.